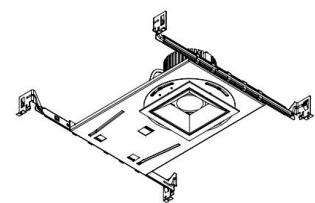
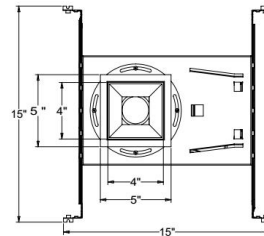
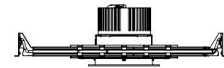
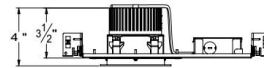
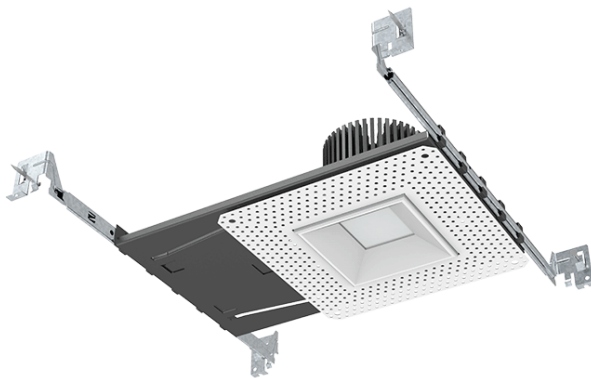


# LI-AL4-NC New Construction Adjustable Square Trimless LED Recessed Downlight

<b>Catalog #</b>		<b>Prepared by</b>	
<b>Project</b>		<b>Date</b>	
<b>Notes</b>			



## Features

4-way hanger bar install, the hanger bar can be adjusted from 14½ "-24", to adapt to a variety of joist structures and keel sizes.

Lamp height can be adjusted, accommodate 1/2 "to 1 1/4" ceiling thickness. Trimless

Rotated separated reflector, more convenient for parts replacement.

Isolation driver, high power factor and conversion efficiency, constant current output.

Square new construction bottom plate can adjust 45°, suitable for special occasions. 4" and 6", square and round new construction share the same bottom plate.

Different opening accessories, for fast replacement.

Application: Automotive and Parking, Education, Government, Healthcare, Hospitality, Offices and Banks, Religious, Retail.

## Specification

Power	15/20/30W
Voltage	PoE-N
Lumen	1000/1500/2250LM
Power factor	PF>0.98
CRI	80+/90+
Frequency	50/60Hz
Dimmable	NONE/TRIAC/RD 0-10V
CCT	2700/3000/3500K
Lifespan	50000 H
Certification	ETL

ARCHITECTURAL DOWNLIGHT

# LI-AL4-NC

## New Construction

## Adjustable Square

## Trimless LED

## Recessed Downlight

### Trim

Die-casting aluminum, high-reflective powder spraying, high light uniformity.

### Light Source

High light transmittance, strong light diffusion performance, no shadow, no glare.

Point light source turned into spherical light.

Milky white light transmission rate reach 90% above.

Excellent concealed of light source, achieve the best light transmission rate without seeing the LED lamp bead.

### Radiator

Excellent cold forging radiator, good heat dissipation.

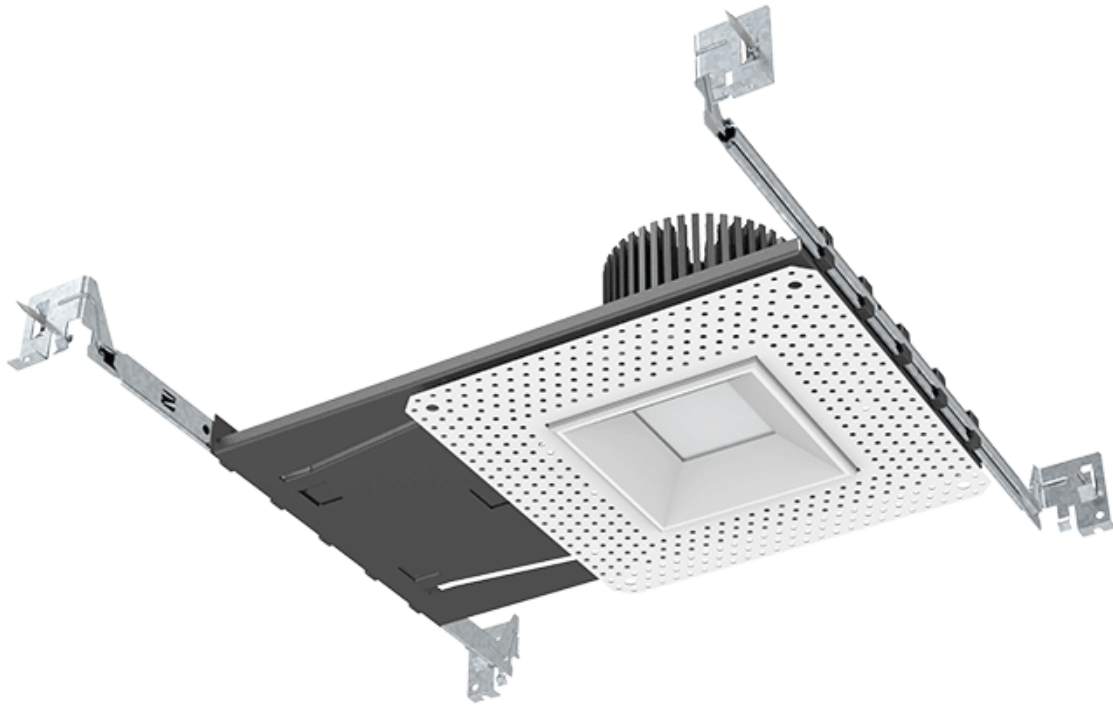
### Ordering Guide

Series	Trim	Open Type	Input Voltage
<input type="checkbox"/> LI-AL4-NC 4" Adjustable LED Downlight	<input type="checkbox"/> Trimless	<input type="checkbox"/> Round <input type="checkbox"/> Square	<input type="checkbox"/> PoE-N
Watt/Lumen	Color Temperature	Reflector Finish	
<input type="checkbox"/> 15W 1000LM	<input type="checkbox"/> 2700K	<input type="checkbox"/> White	
<input type="checkbox"/> 20W 1500LM	<input type="checkbox"/> 3000K	<input type="checkbox"/> Black	
<input type="checkbox"/> 30W 2250LM	<input type="checkbox"/> 3500K	<input type="checkbox"/> Stain Nickel <input type="checkbox"/> Clear	

**LI-AL4-NC**  
**New Construction**  
**Adjustable Square**  
**Trimless LED**  
**Recessed Downlight**

---

Trimless



ARCHITECTURAL DOWNLIGHT