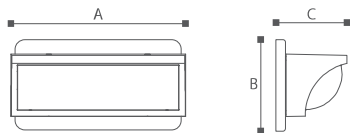
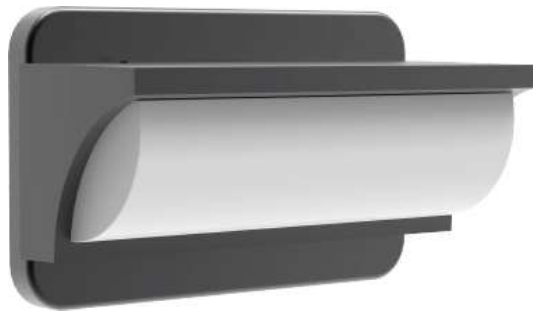




Shiner

19301

Shiner adopts simple Nordic design style. This lamp is divided into the die casting aluminium of spray model and the lampshade of milky white two parts, die casting hale line, collocation is fruity plastic lampshade bring out the best in each other. When night falls and the soft light shines down, everything is so comfortable and peaceful.



LED 13 ^w	TEMPERATURE 2700K - 6500K
MAX. 1200 LUMENS	IP65

Lamp	Lumen	A	B	C
DZ-GL19301	LED 13W200LM	9.0"	5.1"	3.7"

