

PROJECT:
TYPE:

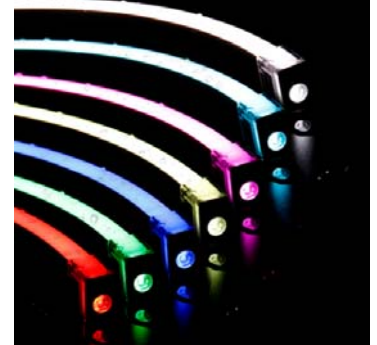
Flex Lineal

- **Flex Lineal features:**
- Ideal for cove light, Facade light etc
- Max Length:16.4'
- Material: Two-tone silicone extrusion + flexible FPC + highlight LED;
- Anti-UV;
- Flexible;
- Mild and even light output;
- Cut table and bendable+ non-soldering terminal;
- Hollow silicon tube protect LEDs well;
- Working time≥50000H
- Cutting unit 50mm
- Operating temperature -20°C~+45°C
- Certification UL E487469, CE, ROHS, CB
- Standard length 5 meters per roll
- Application Indoor/Outdoor
- IP67 silicone extrusion, hollow inside;
- Suitable for wet location and short time under water;
- Suitable for indoor and outdoor projects.
- Input voltage: 24VDC
- Beam angle: 115°
- Anti-UV grade: UVA-340
- Weight/meter: 2162g
- Operating temperature: -20°C~+45°C
- Storage temperature: 0°C~+60°C

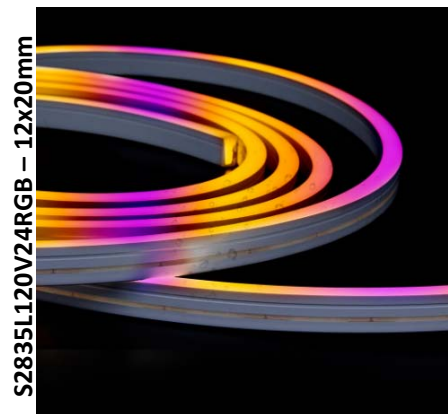


S2835L120Q24 – 12 x 12mm

S2835L120V24 – 9.5 x 22mm



S2835L120Q24 – 12 x 20mm



S2835L120V24RGB – 12x20mm

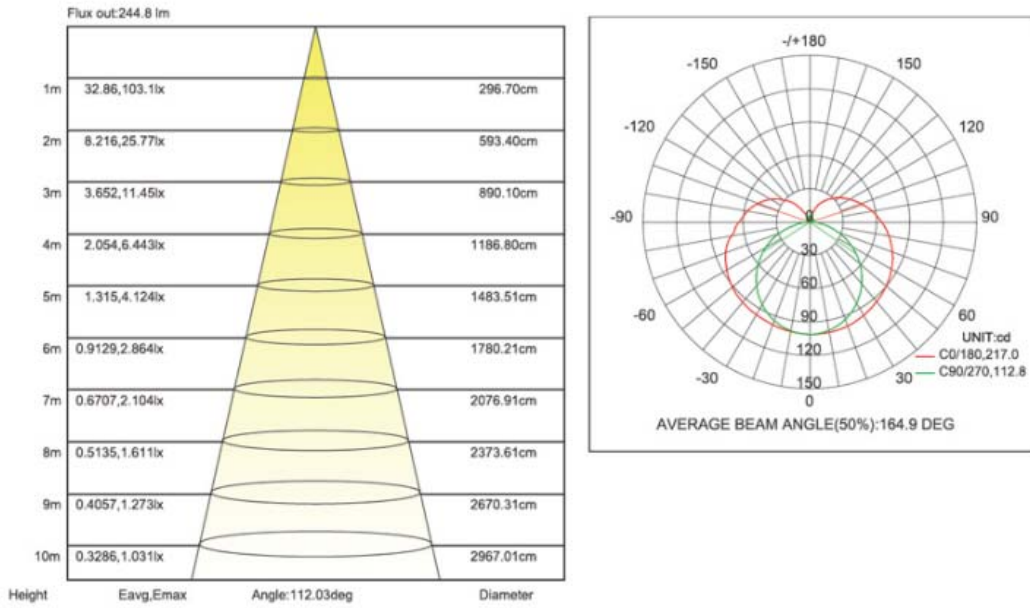
Due to continuous improvements, the information herein may be changed without notice
 LED Industries reserves the right to change the product or any other detail without notice
 All Pictures shown are for illustration purpose only. Actual product may vary due to product enhancement.





POWERED BY LED INDUSTRIES

Flex Lineal



LED Industries reserves the right to change specs or exchange fixtures without further notice

Due to continuous improvements, the information herein may be changed without notice
 LED Industries reserves the right to change the product or any other detail without notice
 All Pictures shown are for illustration purpose only. Actual product may vary due to product enhancement.



POWERED BY LED INDUSTRIES

Accessory Single Color



Straight through cap



Side through cap



End cap without hole



Installation with clip
20 * 11 * 12mm

R1



Straight through cap

S1



Back through cap

S2

R2



Side through cap

S3

R3



End cap without hole

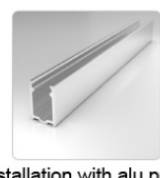
S4

RC1



Installation with clip
20*17.2*21mm

SC1



Installation with alu profile
1000*17.2*21mm

SC2



Straight through cap

SS1



Back through cap

SS2



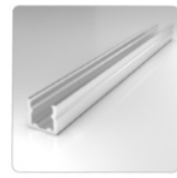
Side through cap

SS3



End cap without hole

SS4



Installation with alu profile
1000*17.2*14mm

SSC1



Installation with clip
20*17.2*14mm

SSC2

Accessory RGB



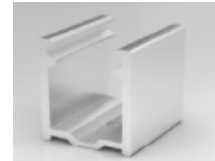
RGB1



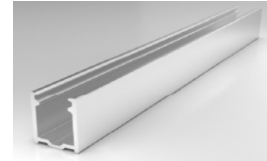
RGB2



RGB3



RGBBC1



RGBBC2



RGBP1

Due to continuous improvements, the information herein may be changed without notice
LED Industries reserves the right to change the product or any other detail without notice
All Pictures shown are for illustration purpose only. Actual product may vary due to product enhancement.



POWERED BY LED INDUSTRIES

Flex Lineal

Order Information

LI-S2835L120Q24-1-27-SS1-SSC1

Item #	Watts	Dimension L x W x H	CCT	Input	Accessories
LI-S2835L120Q24	36	1-198" * 0.47" * 0.47"	27-27K 30-30K 40-40K	24VDC	SS1,SS2,SS3,SS4, SSC1,SSC2
LI-S2835L120Q24	48	2-198" * 0.47" * 0.80"	27-27K 30-30K 40-40K R-Red G-Green B-Blue	24VDC	S1,S2,S3,S4, SC1,SC2
LI-S2835L120V24	72	1-198" * 0.37" * 0.87"	27-27K 30-30K 40-40K	24VDC	R1,R2,R3, RC1
LI-S2835L120V24	50	2-198" * 0.68" * 0.83"	1-RGB	24VDC	RGB1,RGB2,RGB3, RGBC1,RGBC2, RGPB1

Installation

Install aluminum Clips to the surface and curve the Flex Lineal as per design By installing clips.

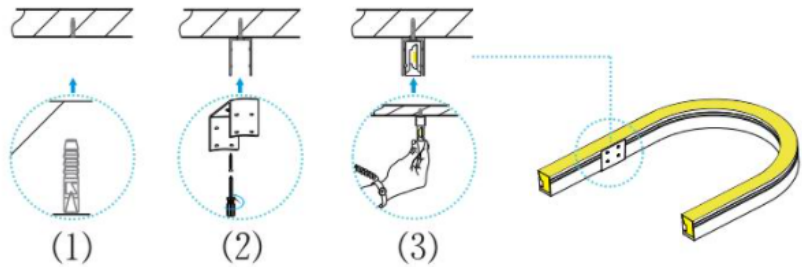
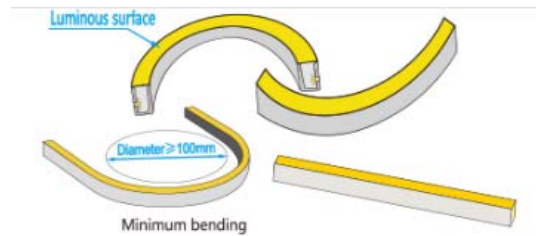
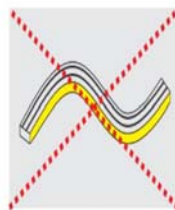


Illustration is for showing the correct bending



Due to continuous improvements, the information herein may be changed without notice
LED Industries reserves the right to change the product or any other detail without notice
All Pictures shown are for illustration purpose only. Actual product may vary due to product enhancement.